

# Project Description

Our clients joked that this winter would not include a warm-weather beach vacation because they were spending that money on their remodel, so we joked back asking them if they were interested in making their bathroom into a beach retreat – they jumped at the idea! Only two issues presented themselves as obstacles in the blank slate corner of their unfinished, lower-level storage room: we cut a thirty-foot-long trench in the concrete to overcome the obvious plumbing issue, and we designed a fun and visually exciting set of colors, volumes and finishes to disguise the fact that a window to the outside was not possible – we'd need to bring the sun to this beach on our own!

Armed with a set of design metaphors, we turned the space into an oceanside vignette:

- The exotic burlwood vanity and “tree” anchor one side of the bath while hiding some secret functionalities: the tapering tree hides incoming water lines held away from the exterior wall, and the concave curve at the narrower section of the vanity allows our vision-impaired client to cozy right up to the mirror to do her makeup and hair without feeling blind.
- The striated brown bench is “the driftwood that rolls up on shore.” He had mentioned how he likes to hang out with her while she gets ready, but she didn’t want him in her space. The bench flows out of the shower, giving him the perfect spot (it’s even heated) to be with her.
- The glass tiled “wave” that adds such a dramatic sense of place over the bench hides a convenient set of cubby shelves. Baskets filled with toiletries, mouthwash, and other items are concealed while remaining easily accessible.
- The shower is sleek, contemporary, and simple with a multi-functioning set of Toto shower products for a spa-like experience. With a similarly striated tile as the bench, the wall color recalls a windswept white sandy beach. The washed stone floor rolls over the curb and onto the bathroom floor, leaving a mark like a receding tide leaves remnant shells and stones.
- Set into the inside corner, the toileting area is staffed by a functional floating storage cabinet that conceals magazines, tissue, and other necessary items. Above the bypassing doors, it provides towel storage, a candle shelf, and a focal point for our clients’ favorite poster reminding them of their recent trip to Hawaii.
- Aging in the home was a very important topic with our clients who were concerned about some issues their peers were experiencing. We recommended and installed a Toto toilet with a Washlet that provides integral hygienic capabilities (washing and drying) along with other nice features such as a heated seat and air filtration.

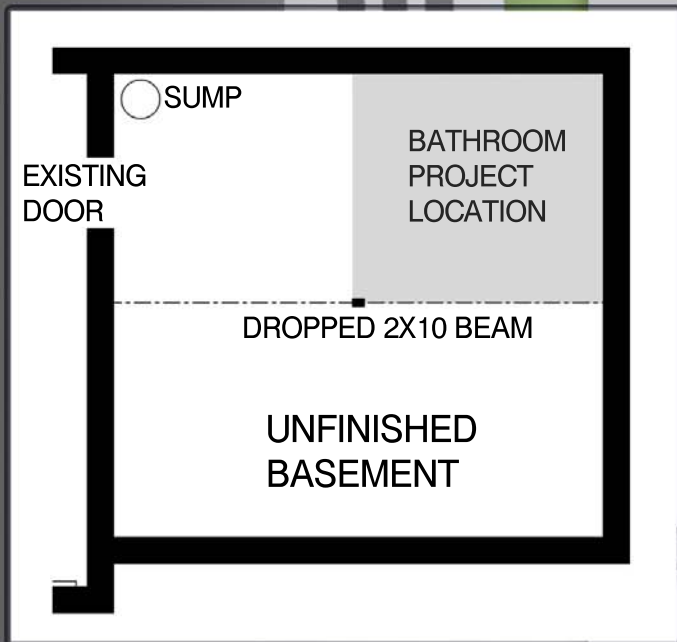
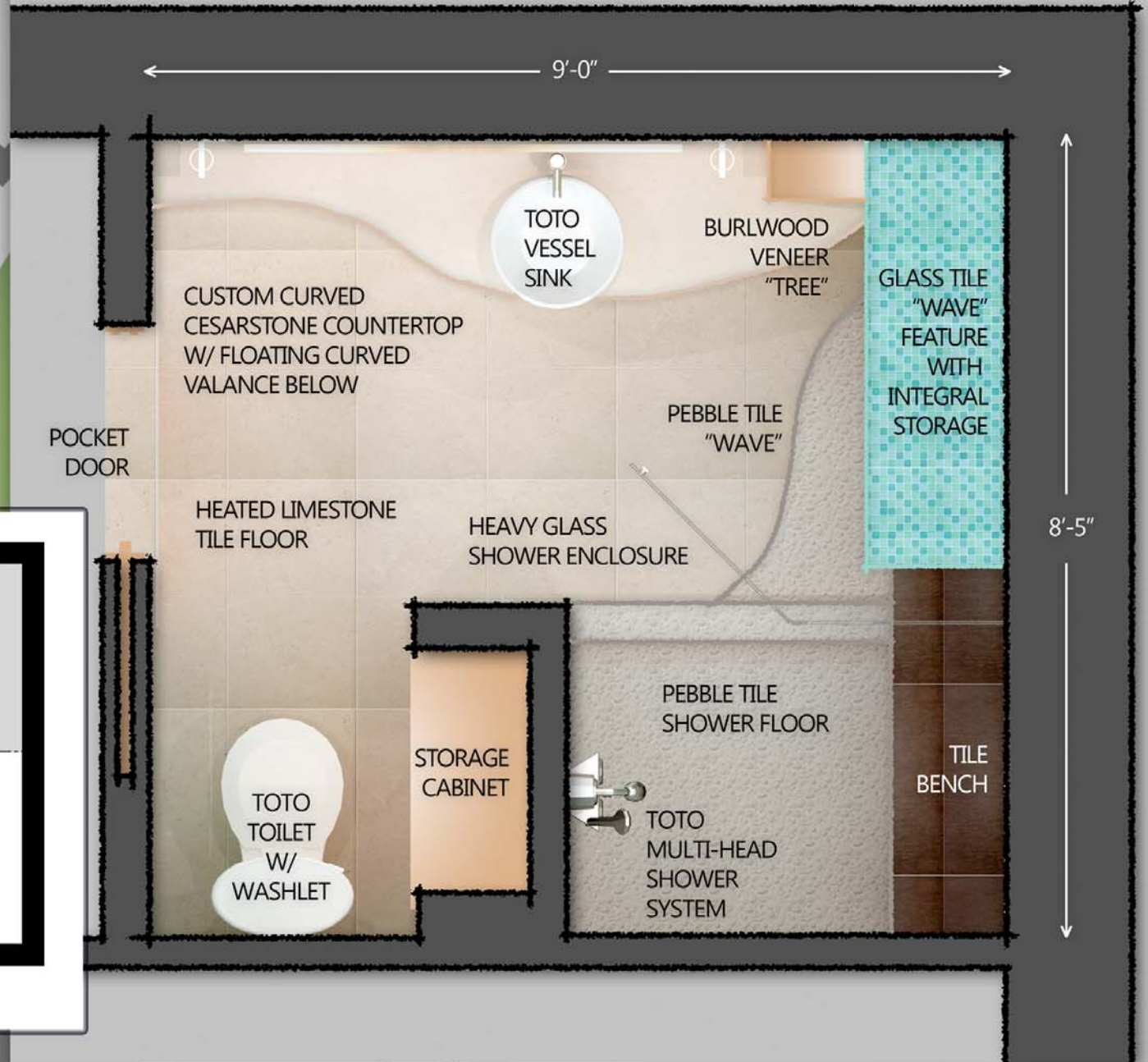
The ample space provided for a limitless set of design solutions which then resulted in a tendency for the design features to become, in themselves, a challenge to bring to fruition. The artisans entrusted to make this visually dynamic space come to life responded with their best efforts and the result is without flaw.

- Literally cutting slivers out of 1x1 glass tiles to complete the “wave” made our tile setter chuckle.
- Building a continuous-grain curved door and two curved drawer fronts cut from one piece of burlwood veneer made our cabinetmaker scratch his head a few times before he figured out how to do it.
- Heating, bending and clamping a piece of Ceaserstone along the vanity’s mitered wavefront edge was “a first” for our counter top fabricators, but they were clearly up to the task.

To design and build a space that so completely blurs the line between functionality and art was a real treat. Built from a metaphorical memory, the new master bathroom is filled with functionality and a style that perfectly captures our clients’ personality.

# Project Floor Plans

AFTER PLAN



BEFORE PLAN

# Project Drawings

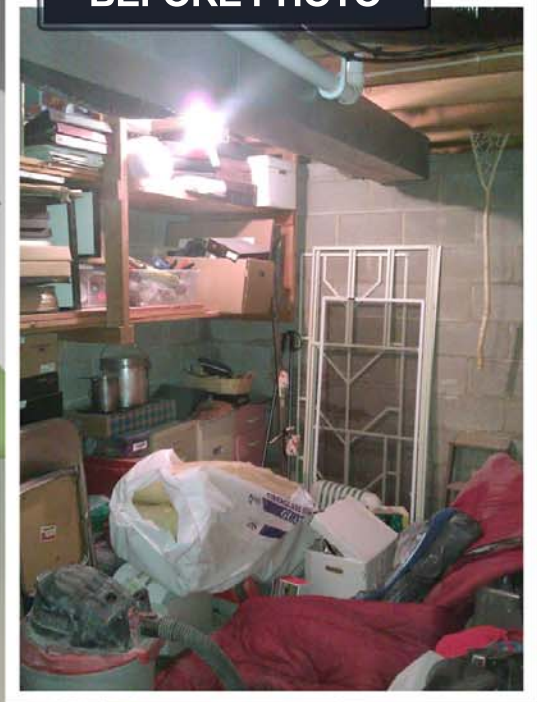


PRE-CONSTRUCTION COMPUTER VISUALIZATIONS

# Project Photos

The unfinished basement provided a blank canvas for the design team to execute their vision for the client's relaxing bathroom retreat. Repeating curved elements intersect like waves lapping on the ocean shore, giving a soft edge to every surface. Organic shapes created from square materials test the craftsmanship of the trade contractors who brought the architecture to life with impeccable attention to detail.

BEFORE PHOTO



BUILD

AFTER PHOTO

# Project Photos

AFTER PHOTO

The floating vanity features a purposeful curved front, for reasons beyond the aesthetic composition. The shallow end of the vanity allows the owner to get closer to the mirror while applying makeup, whereas the deeper portions of the counter provide useful working and storage space.



BEFORE PHOTO



© revolutiondesignbuild.com

# Project Photos

## DURING CONSTRUCTION PHOTOS



Careful and thoughtful framing details create the structure for the dynamic and graceful curves that changed this square space into something much more exciting.

# Project Photos

## COUNTERTOP FABRICATION PHOTOS



Never before had our countertop fabricators endeavored such a project: combining a mitered edge with both a concave and convex front. Multiple clamping processes were required to form the front edge without fracturing the Cesarstone. The result is a perfect synthesis with the radiused door and drawer fronts fabricated by our cabinetmaker.



**AFTER PHOTO**

# Project Photos



DESIGN +

# Project Photos

