

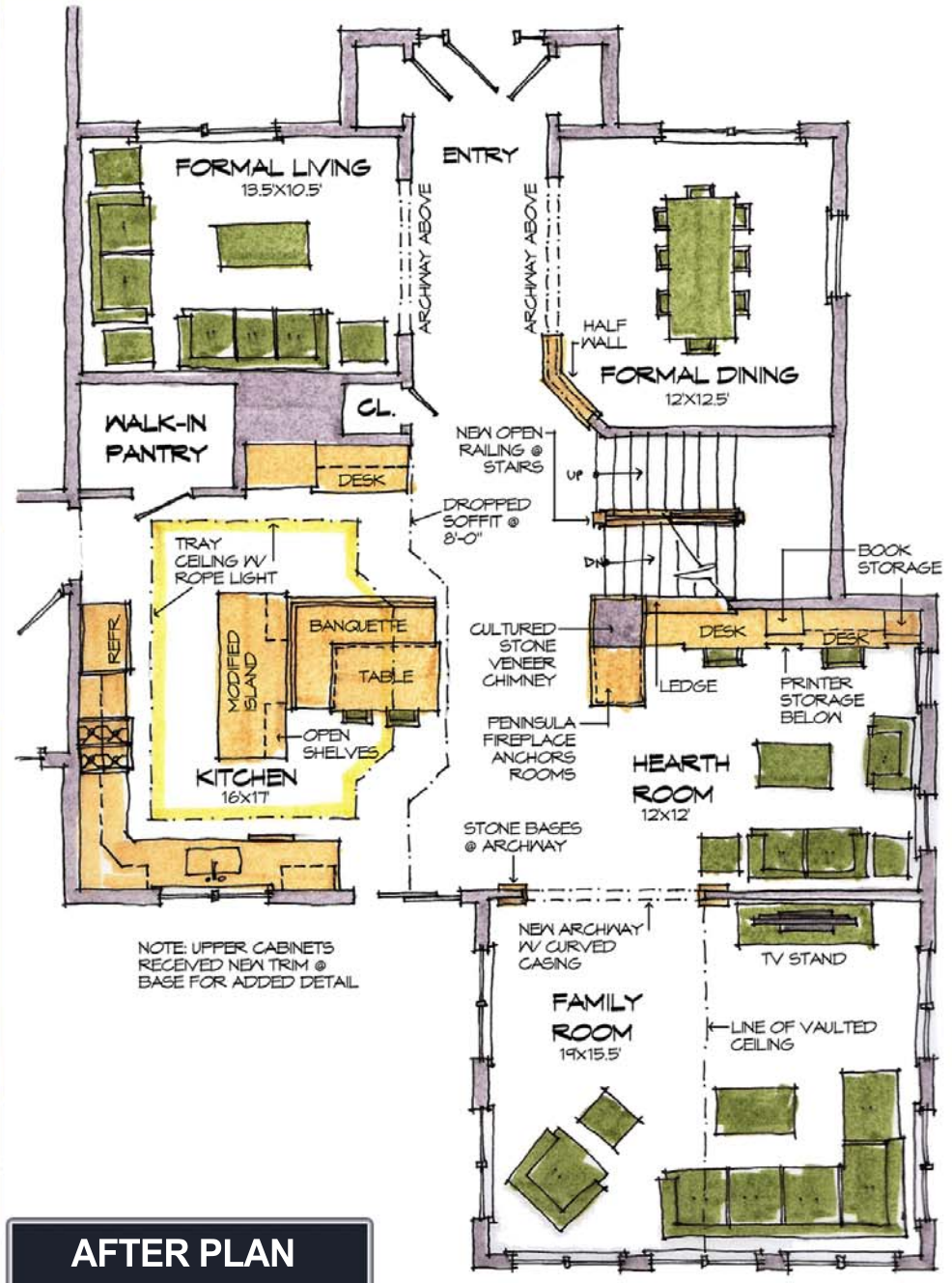
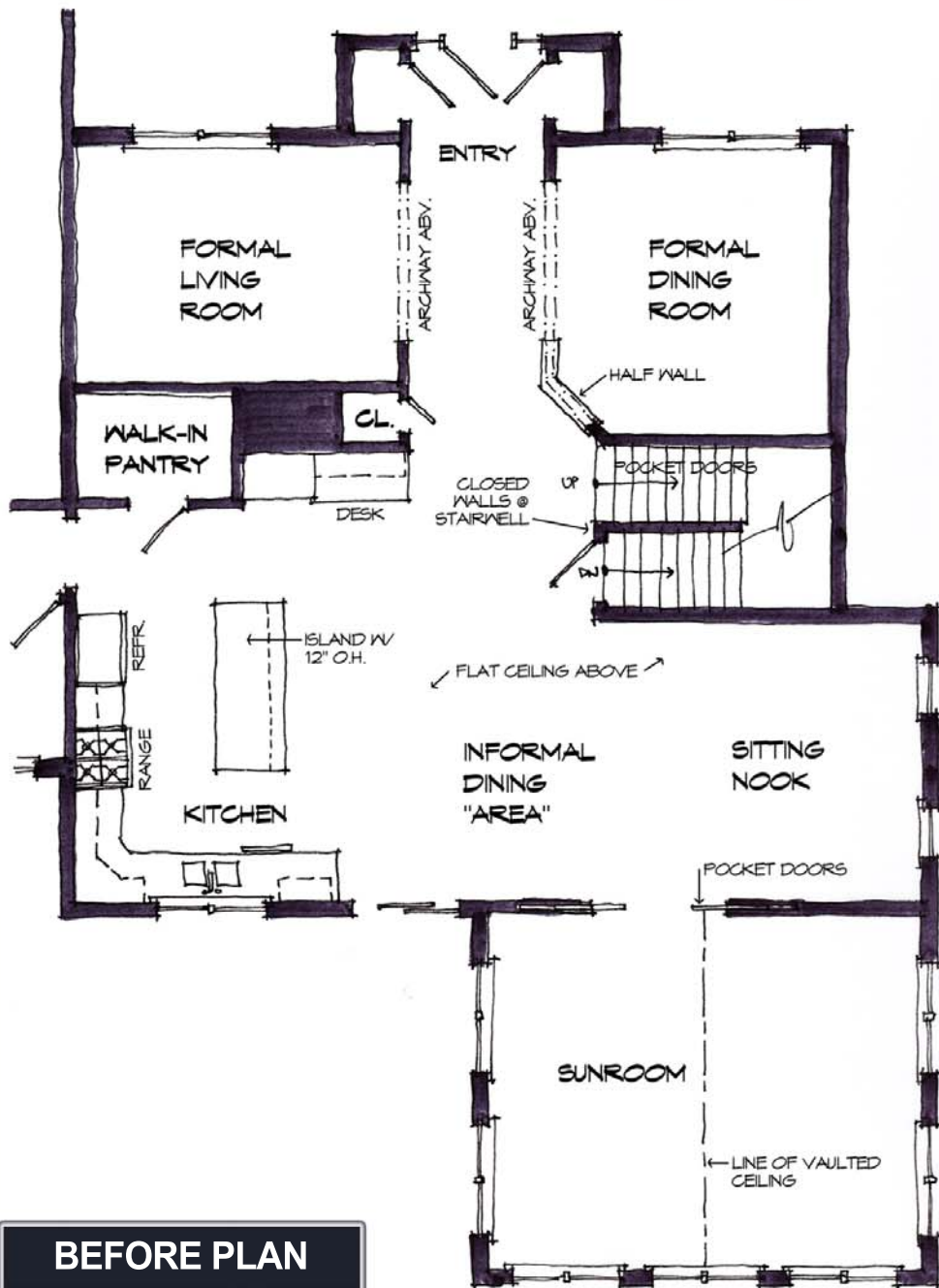
Project Description

Ironically custom built for them, our clients' six-year-old home was as disjointed and unorganized as they come. Placed in the role of designer by their previous builder, they ended up with a disjointed home filled with non-functioning spaces. After our interview, where we learned their house "just doesn't make any sense," we sought to create useful task-based spaces while adding order and logic to the house.

The main and most dramatic gesture involved the installation of a three-sided pier fireplace in the middle of the house, alongside a freshly opened stairwell. The fireplace creates the vantage points, spatial definition, and connections the house so desperately needed. The kitchen table, which previously sat in the middle of the house was replaced with a built-in banquette connected to the existing island. And to further define the boundaries of the kitchen, we dropped the perimeter ceilings and extended this new soffit into the middle ground of the house to capture the area above the table.

Other areas of the home, like the new hearth room and the family/sun room offer more subtle changes that foster the connections made with the larger gestures and allow the varied spaces to act cohesively and purposefully.

Project Floor Plans





Perspective Sketch of Kitchen from Hearth Room
NOT TO SCALE

CONCEPTUAL SKETCHES



Hearth Room Desk Elevation
SCALE $\frac{3}{8}'' = 1'-0''$

Project Photos

BEFORE PHOTO

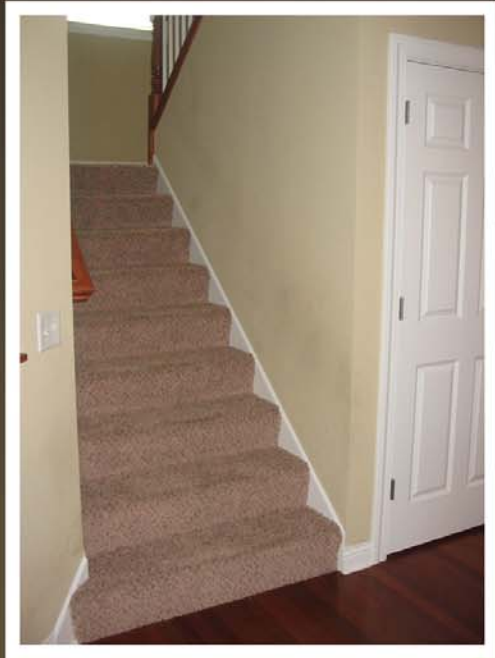


With no definition of space or boundaries, see how the kitchen table floated into the middle of the whole house; conversely, with ceiling definition and a lovely built-in and upholstered banquette, the family can dine “in the kitchen” without feeling out in “no man’s land” as they described it.

AFTER PHOTO



Project Photos



BEFORE PHOTO



AFTER PHOTO

The dramatic transformation of the stairs with the pier fireplace provides visual connections and a central focal point that defines each area (the hearth room hides quietly behind, the kitchen banquette overlooks, and the family room stone archway all center on the fireplace).

Project Photos



BEFORE PHOTOS



“What is this?” asked our client. Before, a strange dimension and lack of boundary left this large space of the house without a real understood purpose. The working desk and the seating space has turned this room into the quiet hearth room our clients wanted for “down time.”

AFTER PHOTO

Project Photos



A common language: colors, textures and materials were all selected to accentuate what was already present – there was no reason to start all over again – we just needed a common splash here and there to connect these new lovely and unique spaces with details that demonstrate harmony and strong craftsmanship.

Project Photos



Project Photos

